



SAILING INSTRUCTIONS

ISRAEL OPEN CHAMPIONSHIP 16-18 OCTOBER 2022

The Israel Sailing Association in co-operation with Sdot Yam Sailing Club, are pleased to invite 470 sailors to take part in the:

2022 Mixed 470 Israel open Championship (for mixed crews)

in Sdot Yam, Israel - 16 to 18 October 2022

*Organizing Authority (OA): Sdot Yam Sailing Club,
in co-operation with the Israeli Sailing Association*

1. RULES

- 1.1 The Championship will be governed by the rules as defined in *Racing Rules of Sailing* (RRS).
- 1.2 National Authority prescriptions will apply.
- 1.3 In all rules governing this Championship:
 - a. Breaches of rules in the sailing instructions marked **[NP]** shall not be grounds for protests by a boat. This changes RRS 60.1(a).
 - b. For breaches of rules in the sailing instructions marked **[SP]** a standard penalty may be applied by the Race Committee without a hearing. This **changes RRS 63.1 and A5**.
- 1.4 **If** there is a conflict between languages the English text will take precedence.
- 1.5 If there is a conflict between the Notice of Race (NoR) and these SIs, the SIs will take precedence. This changes RRS 63.7.



2. [DP] [SP] [NP] ADVERTISING, BOW NUMBERS, AND ELECTRONIC EQUIPMENT

- 2.1 [DP] Boats shall display advertising chosen and supplied by the OA.
- 2.2 Boats may be required to carry on-board cameras, sound equipment or positioning equipment as specified by the OA.

3. [DP] CODE OF CONDUCT

- 3.1 Competitors and support persons shall comply with any reasonable requests from a regatta official.
- 3.2 Competitors shall handle any boats or equipment provided by the OA with proper care and seamanship, and in compliance with any written instructions.
- 3.3 [SP] Boats not racing shall avoid the area where boats are racing and any official boats.
- 3.4 The OA may reduce or remove a prize in the case of misconduct or refusal to comply with any reasonable request, including attendance at official functions.

4. COMMUNICATIONS WITH COMPETITORS

- 4.1 Notices to competitors will be posted on the official notice board. Signals made ashore will be displayed on the signal mast located in front of the race office.
- 4.2 When flag AP is displayed ashore, '1 minute' is replaced with 'not less than 45 minutes' in race signal AP.
- 4.3 [SP] [NP] Flag D displayed ashore means: 'The warning signals will be made not less than 45 minutes after flag D is displayed or not before the scheduled time, whichever is later. 'Boats shall not leave the boat park until this signal is made'.

5. CHANGES TO THE SAILING INSTRUCTIONS

- 5.1 Any change to the Sailing Instructions will be posted before 11:00 on the day it will take effect, except that any change to the schedule of races of a day will be posted by 20.00 on the day before it will take effect.

6. [NP] CHAMPIONSHIP[NP]

- 6.1 **The Championship format will consist of single series.**



7. SCHEDULE

7.1 Schedule of races:

Day 1 - 16 October 2022	Registration	09:00 - 11:00
Day 1 - 16 October 2022	races	13:00 -
Day 2 - 17 October 2022	races	TBA
Day 3 - 18 October 2022	races	TBA
Day 3 - 18 October 2022	Prize Giving	TBA

7.2 No warning signal shall be given after 16:00 on the last racing day.

7.3 No more than three races shall be sailed each day.

7.4 Races not sailed on the scheduled day may be sailed on following days at the discretion of the race committee.

8. CLASS FLAG

8.1 Flag for all races will be White flag with Black 470 insignia.

9. REARACING AREA

9.1 Addendum A shows the location of the racing area.

10. THE COURSES

10.1 The diagrams in Addendum B shows the courses, the course designations, the approximate angles between legs, the order in which marks are to be passed, and the side on which each mark is to be left.

10.2 Not later than the warning signal, the race committee signal boat will display the course designation.

10.3 In case of a missing mark at a gate the remaining mark should be rounded, leaving the mark to port. This changes RRS 28.1 and RRS 34.

11. MARKS

11.1 Marks 1, 2, Gates 3 (3s/3p) and 4 (4s/4p) will be orange pyramid inflatable buoys.

11.2 The starting marks will be the Race Committee starting vessel at the starboard end, and a vessel or mark displaying an orange flag at the port end. See Addendum B.



- 11.3 The finishing marks will be a Race Committee vessel at the port end displaying a blue flag and a buoy displaying a blue flag at the starboard end. See Addendum B.
- 11.4 New marks as provided in SI 13, will be green pyramid inflatable buoys.
- 11.5 A race committee vessel signaling a change of course is a mark as provided in SI 13.5.

12. THE START

- 12.1 The starting line will be between staffs displaying an orange flag on the starting marks.
- 12.2 To alert boats that a race or sequence of races will begin soon, the orange starting line flags will be displayed with one sound for at least five minutes before a warning signal is displayed.
- 12.3 [DP] [NP] Boats whose warning signal has not been made shall keep clear to leeward of the starting area. The starting area is defined as a rectangle 100 meters from the starting line and marks in all directions.
- 12.4 A boat starting later than four minutes after her starting signal will be scored DNS. This changes RRS A4 and RRS A5.

13 CHANGE OF THE NEXT LEG OF THE COURSE

- 13.1 A change of the next leg of the course will be made as in RRS 33.
- 13.2 To change the next leg of the course, the Race Committee will
- lay a new mark,
 - move the finishing line, or
 - move the leeward gate.
- 13.3 When a new mark is laid, the original mark will be removed as soon as practicable. When in a subsequent change a new mark is replaced, it will be replaced by an original mark.
- 13.4 Any action or no action by the race committee under this instruction SI13 will not be grounds for redress under RRS 62.1(a).
- 13.5 Except at a gate, boats shall pass between the race committee vessel signaling the change of course and the nearby mark, leaving the mark to port and the race committee boat to starboard. This changes RRS 28.1.



14 THE FINISH

The finishing line will be between blue flags on the finishing marks.

15 PENALTY SYSTEM

- 15.1 RRS Appendix P, Special Procedures for RRS 42, will apply.
- 15.2 RRS P2.3 will not apply and RRS P2.2 is changed so that it will apply to any penalty after the first one.

16 TIME LIMITS AND TARGET TIMES

16.1 Time limits are as follows:

	Time Limit	Mark 1 Time Limit	Finish Window	Race Target Time
Fleet race	75	20	10	45-50

- 16.2 If no boat has passed Mark 1 within the Mark 1 time limit the race will be abandoned.
- 16.3 Boats failing to finish within the time stated in the Finish Window after the first boat sails the course and finishes, will be scored Did Not Finish. This changes RRS 35 and RRS A5.
- 16.4 Failure to meet the target time will not be grounds for redress. This changes RRS 62.1(a).

17 PROTESTS AND HEARING REQUESTS

- 17.1 A boat intending to protest, another boat because of an incident occurred in the racing area, must orally inform the race committee when she finishes, that she intends to protest, by hailing: "protest". This changes RRS 61.1.
- 17.2 Protest forms are available in the race office.
- 17.3 The protest time limit is 60 minutes after the last boat has finished the last race of the day or racing postponed or abandoned for the day.



- 17.4 Notices will be posted within 30 minutes of the protest time limit to inform competitors of hearings in which they are parties or named as witnesses. Hearings will be held in the protest room beginning at the time posted. Hearings may be scheduled to begin up to 15 minutes before the end of the protest time limit.
- 17.5 Notices of protests by the Race Committee, will be posted to inform boats under RRS 61.1(b).
- 17.6 A list of boats that have been penalized under RRS Appendix P for breaking RRS 42 and under SI 17.8, will be posted.
- 17.7 Penalties for breaches of the Support Team Regulations, Class Rules or rules in the NoR and SIs marked [DP] or [SP], should the case go to a hearing, are at the discretion of the Protest Committee. A boat may accept a discretionary penalty for the breaches stated above before a hearing concerning the same incident by completing a form available at the jury office.
- 17.8 For breaches of NoR/SI marked [SP], the race committee may apply a standard penalty without a hearing. A list of these breaches and the associated standard penalties will be posted on the Official Notice Board. However, the race committee may protest a boat when they consider the standard penalty to be inappropriate. A boat that has been penalized with a standard penalty can neither be protested for the same incident by another boat, nor can another boat request redress for this race committee action. This changes RRS 60.1, 63.1 and Appendix A5.

18 SCORING

- 18.1 The Low Point System of RRS Appendix A shall apply to all races.
- 18.2 To request correction of an alleged error in posted race or results, a boat may complete a scoring enquiry form available at the race office.
- 18.3 Discards:
- When fewer than 3 races have been completed, a boat's series score will be the total of her race scores.
 - When 3 or more races have been completed, a boat's series score will be the total of her race scores excluding her worst score.



19 [DP] [NP] SAFETY REGULATIONS

19.1 [SP] Check-out and check-in:

- a. Before leaving to race on each scheduled racing day, a crew shall personally sign out on the required form located next to the Race Office.
- b. Within the protest time limit after returning ashore, a crew shall personally sign in on the required form located next to the Race Office.

19.2 [SP] Boats not leaving the harbour for a scheduled race, shall promptly notify the Race Office.

19.3 [SP] A boat which retires from racing shall notify the Race Committee before leaving the racing area, if possible, and shall complete a retirement declaration form at the Race Office as soon as possible after returning ashore.

19.4 All competitors shall wear a personal flotation device at any time on the water, except briefly while changing or adjusting clothing or personal equipment. Wet suits and dry suits are not personal flotation devices. This changes RRS 40.

20 [DP] [NP] REPLACEMENT OF CREW OR EQUIPMENT

20.1 Substitution of competitors will not be permitted without prior written approval of the race committee and shall comply with any restrictions in the Notice of Race.

20.2 Substitution of damaged or lost equipment shall be made according to approval of the race committee.

21 OFFICIAL BOATS

Official boats will be marked as follows:

Official Boat	Flag
Race Committee	White flag with Black "RC"
Media / Press	White flag with "Media"
Jury	Black flag with White "JURY"

22 [NP] [DP] SUPPORT BOATS

See Addendum C Support Boat Regulation.



23 [DP] [NP] TRASH DISPOSAL

In addition to RRS 47 trash may be placed aboard support and race committee boats.

24 DP] [NP] RADIO COMMUNICATION

A boat shall neither make radio transmissions while racing nor receive radio communications not available to all boats, except in an emergency or when using equipment provided by the Race Committee. This restriction also applies to mobile telephones.

25 PRIZES AND TITLES

25.1 Prizes and titles will be as stated in the Notice of Race.

26 DISCLAIMER OF LIABILITY AND RISK STATEMENT

- 26.1 Competitors and support team members participate in the Championship entirely at their own risk and they are reminded of the provisions of RRS 3, Decision to Race. Sailing is by its nature an unpredictable sport and therefore involves an element of risk. By taking part in the event, each competitor agrees and acknowledges that:
- a. They are aware of the inherent element of risk involved in the sport and accept responsibility for the exposure of themselves, their crew and their boat to such inherent risk whilst taking part in the event;
 - b. They are responsible for the safety of themselves, their crew, their boat and their other property whether afloat or ashore;
 - c. They accept responsibility for any injury, damage or loss to the extent caused by their own actions or omissions;
 - d. By participating in any race, they are satisfied that their boat is in good order, equipped to sail in the event and they are fit to participate;
 - e. The provision of a race management team, safety boats, judges and other officials and volunteers by the organizer does not relieve them of their own responsibilities.
 - f. The provision of safety boat cover is limited to such assistance, particularly in extreme weather conditions, as can be practically provided in the circumstances.
 - g. They will familiarize themselves with any venue/event specific risks, adhere to rules and information produced for the venue/event and they will attend any venue/event safety briefings.



26.2 The Organizing Authority and all parties involved in the regatta organization will not accept any liability for material damage or personal injury or death sustained in conjunction with or prior to, during, or after the regatta.

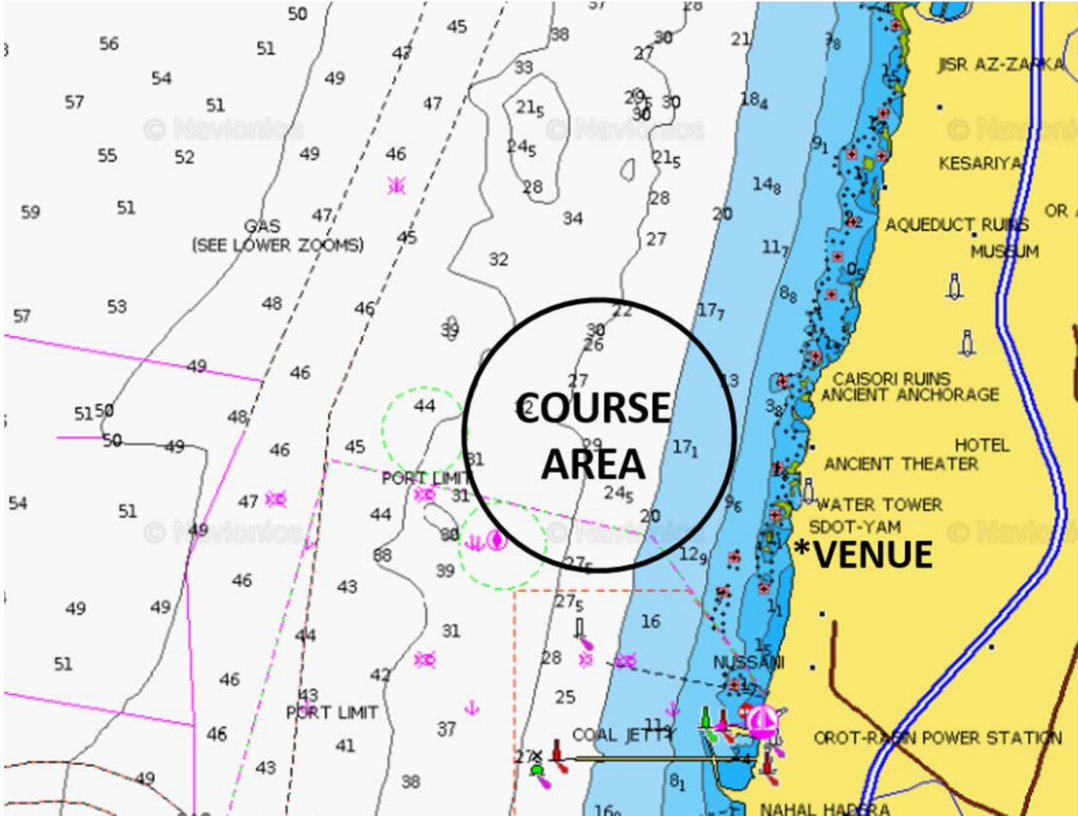
27 RIGHTS TO USE NAME AND LIKENESS

By participating in this Championship competitors automatically grant to the Israeli Sailing Association and to the OA and their sponsors, the right in perpetuity to make, use and show, from time to time at their discretion any motion pictures, still pictures and live, taped or filmed television and other reproductions of the athlete during the Championship, and of all of his or her material related to the Championship, without compensation.

28 INSURANCE

Each participating boat shall be insured with valid third party liability insurance with an appropriate cover.

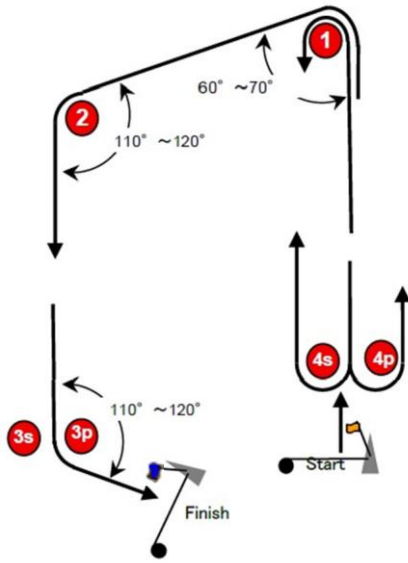
ADDENDUM A – RACING AREA



ADDENDUM B: THE COURSES

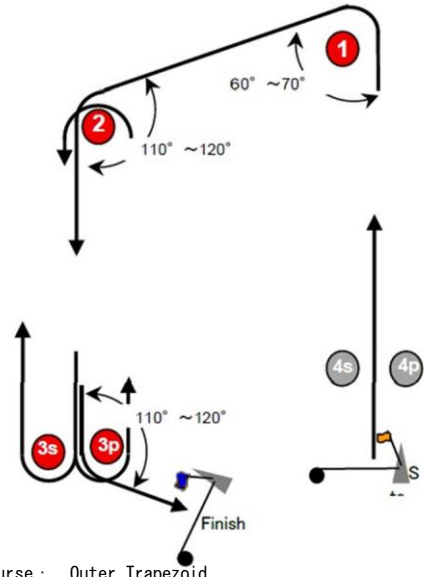
I

O



Course : Inner Trapezoid

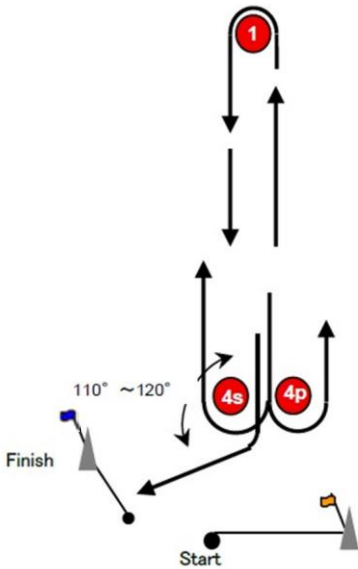
Signal	Mark Rounding Order
I2	Start -1 -4s/4p -1 -2 -3p -Finish
I3	Start -1 -4s/4p -1- 4s/4p -1 -2 -3p -Finish



Course : Outer Trapezoid

Signal	Mark Rounding Order
O2	Start -1 -2 -3s/3p -2 -3p -Finish
O3	Start -1 -2 -3s/3p -2 -3s/3p -2 -3p -Finish

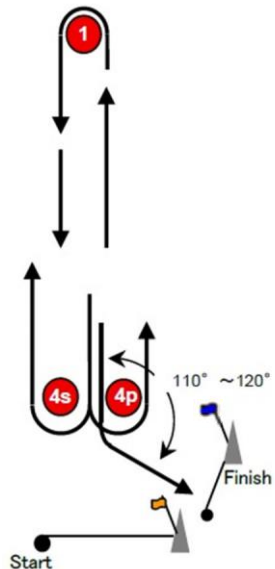
LG



Course : Windward/Leeward

Signal	Mark Rounding Order
LG2	Start -1 -4s/4p -1 -4s -Finish
LG3	Start -1 -4s/4p -1 -4s/4p -1 - 4s - Finish

LR



Course : Windward/Leeward

Signal	Mark Rounding Order
LR2	Start -1 -4s/4p -1 -4p -Finish
LR3	Start -1 -4s/4p -1 -4s/4p -1 -4p -Finish

ADDENDUM C: SUPPORT BOAT REGULATIONS

1. GENERAL

- 1.1 These Support Boat Regulations (SBR) shall apply from 10:00 on 16 October 2022 until 18:00 on 18 October 2022. All times are local times.
- 1.2 For the purposes of these regulations, a support boat includes any boat that is under the control or direction of a person who is or may provide physical or advisory support to an athlete, including the gathering of data that may be used at a later time.
- 1.3 The Organizing Authority may inspect boats at any time to ensure that they comply with these regulations, and the person responsible for the boat shall facilitate such inspection.
- 1.4 An alleged breach of any of these regulations may be referred to the International Jury for a hearing. As a result of the hearing, the International Jury may instruct the Organizing Authority to withdraw accreditation and access rights from the driver or person in charge, with or without the option of substitution, either for a specified period or for the remainder of the competition. Note also, action may be taken under RRS 69.
- 1.5 The Organizing Authority may change these regulations at any time. Any changes will be posted on the official notice board and circulated to team leaders.
- 1.6 The Organizing Authority may, at its discretion, refuse to register support boats not deemed to be suitable.
- 1.7 Support boats and designated drivers shall be registered at the regatta office either before leaving the venue by water for the first time or by 18:00 on the day before the first race of the event that it is supporting, whichever is earlier.
 - a) Each boat shall be insured with valid third-party liability insurance with a minimum coverage of EUR 1.500.000 (or equivalent) per incident. The Organizing Authority is not responsible for verifying the status or validity of certificates.
 - b) Only an accredited person may be a designated driver.
 - c) The person registering the support boat shall confirm that:
 - i. a valid insurance certificate showing proof of third-party liability coverage as required by 1.7.a has been obtained;
 - ii. each designated driver has a motorboat driving license recognized by a national authority appropriate to that boat,
 - iii. anyone who will be using a radio has an appropriate radio operation license recognized by a national authority.
- 1.8 Support boats shall be marked with the applicable national sail letters (see RRS G1.1) clearly displayed on both sides of the boat in strongly contrasting colors at all times while afloat. The minimum height for the letters shall be 200 mm. The letters will not be provided by the Organizing Authority.

2. SAILING VENUE (ADDENDUM E)

- 21 Support boats shall use the designated slipway/area for launching. Once launched, trailers shall be moved immediately to the trailer park or as otherwise directed by the Organizing Authority.
- 22 Only registered support boats will be allowed into the sailing venue.
- 23 When not in use, support boats shall be appropriately berthed at the sailing venue in the allocated areas for support boats for the entire time that these Support Boat Regulations apply.
- 24 Support boats shall not use the dinghy launching slipways or keelboat pontoons for any purpose whatsoever, including mooring, launching and retrieval, and loading and unloading of equipment.

3. SAFETY

- 31 Support boats shall carry on board:
 - a) life jackets / buoyancy aid for all passengers and the driver
 - b) first-aid kit;
 - c) device for making a sound signal;
 - d) compass;
 - e) tow rope (minimum 15m long and 10mm thick);
 - f) operational engine kill cord (also known as a safety lanyard or automatic engine immobilizer);
 - g) hand pump or bailer
 - h) knife; and
 - i) any additional safety equipment required by local maritime law.
- 32 It is recommended that life jackets be worn at all times when afloat.
- 33 When flag Y is displayed on the Signal Boat or ashore, Rule 40 applies also for coach boats.
- 34 **It is strongly recommended that the kill cord is used at all times when the engine is running.**
- 35 The maximum plated / certified passenger limits for the boat shall never be exceeded.
- 36 Team leaders are responsible for overseeing the safe operations of their support boats on the water, including knowledge of who is afloat and ensuring their safe return to the venue.
- 37 At all times, the registered driver(s) of a support boat shall comply with directions given by a race official. In particular, this includes assisting in rescue operations when requested to do so.
- 38 When the race committee displays flag V, all registered support boats shall comply with any instruction given by the race committee or the Organizing Authority as assistance / rescue boats.
- 39 Support boats shall comply with local harbour and marina regulations, including speed limits.

4. GENERAL RESTRICTIONS

- 4.1 The registered driver(s) of a support boat will be responsible for the control of the boat at all times and will be held responsible for any inappropriate behavior, dangerous actions or improper practices, or actions affecting the fairness or safety of competition.
- 4.2 Support boats shall not leave any device, piece of equipment, buoy, marker or similar item permanently in the water. Temporary use of floating objects is allowed for current measurement. These objects shall be removed as soon as the measurement has been taken.
- 4.3 Support boats should take particular care to minimize their wash when transiting the course areas.

5. RACING AREA RESTRICTIONS

- 5.1 Support boats shall stay outside areas where boats are racing from the time of the preparatory signal for the first fleet to start until all boats have finished or the race committee signals a postponement, general recall or abandonment.
- 5.2 During any starting sequence, support boats shall stay at least 50 meters away from the starting line and its extensions, from the time of the warning signal until all boats have left the starting area, or the race committee signals a postponement, general recall or abandonment.
- 5.3 Support Boats shall not be positioned:
 - a) Closer than 50 meters of any boat racing.
 - b) Within 50 meters of the starting line and its extensions.
 - c) Between any boat racing and the next mark of the course.
 - d) Between the inner and outer trapezoid courses.
 - e) Within 50 meters of any mark of the course while boats are in the vicinity of that mark.
 - f) Within 50 meters of the finishing line and marks while boats are finishing.
- 5.4 In addition, support boats that are motoring above 5 knots shall remain at least 150 meters from any boat racing.
- 5.5 When a race committee or jury member instructs a support boat to move further away from the course area, the support boat shall do so immediately.
- 5.6 For the Medal Race support boats with team leaders, coaches and other support personnel shall stay in areas marked with green below from the time of the preparatory signal until all boats have finished or the race committee signals a postponement, general recall or abandonment.

ADDENDUM D: STANDARD PENALTIES

2. ADVERTISING, BOW NUMBERS AND ELECTRONIC EQUIPMENT	
4. COMMUNICATIONS WITH COMPETITORS	
Leaving when flag D is not displayed ashore – SI 4.3	One point scoring penalty in her first race of the day.
19. SAFETY REGULATIONS	
Not Signing Out - SI 19.1 (a)	One point scoring penalty in her first race of the day
Not Signing In - SI 19.1 (b)	One point scoring penalty in her last race of the day
Not notifying the race office when not leaving the shore for the day's races – SI 19.2	One point scoring penalty in her closest sailed race.
Not notifying the race office when retiring from a race – SI 19.3	One point scoring penalty in her closest sailed race.
3. CODE OF CONDUCT	
Boats not racing shall avoid the area where boats are racing and any official boats. – SI 3.3	One point scoring penalty in her closest sailed race.

ADDENDUM E: VENUE MAP

